

IMP00096

A.M.C. Amsterdam CT TWIN
Khonsuemma'a (Khert)
IMP00096
Tuesday, Jan 01, 1901 IMP00096

A.M.C. Amsterdam
Khonsuemma'a (Khert)
IMP00096
Tuesday, Jan 01, 1901 IMP00096

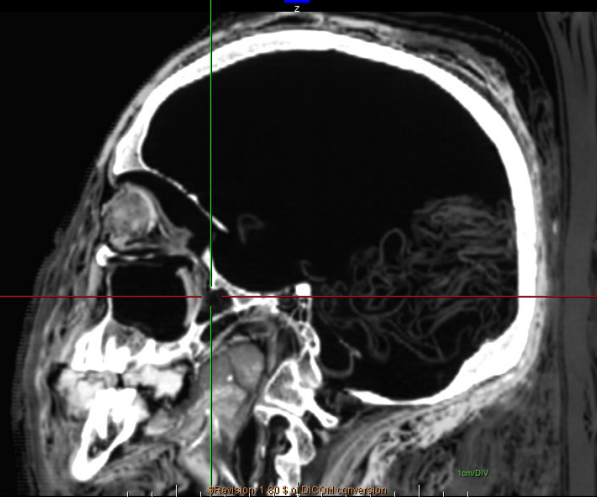


Tilt: 0.0
120 kV
200 mA
3D Rendering
W: 291C: 461

\$Revision: 1.80 \$ of DICOM conversion

Viewport: 39.386 x 20.798 cm
Angle: 90.0° -90.0°

Non-Primary Study



Tilt: 0.0
120 kV
200 mA
YZ Plane - (480.2813 μm)
W: 1531/C: -266
Slice 237 of 512

Non-Primary Study

CT TWIN
IMP00096

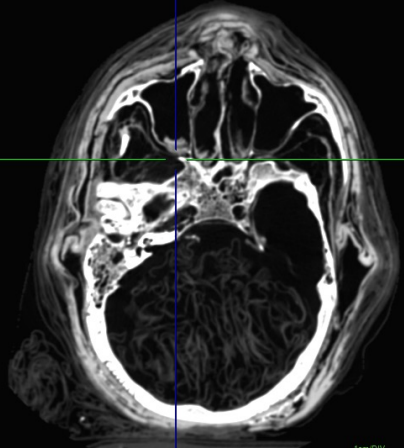
A.M.C. Amsterdam CT TWIN
Khonsuemma'a (Khert)
IMP00096
Tuesday, Jan 01, 1901 IMP00096

A.M.C. Amsterdam
Khonsuemma'a (Khert)
IMP00096
Tuesday, Jan 01, 1901 IMP00096

Viewport: 49.307 x 26.103 cm
Angle: 0.0° 0.0°

Viewport: 39.320 x 20.798 cm
Angle: 0.0° 90.0°

Non-Primary Study

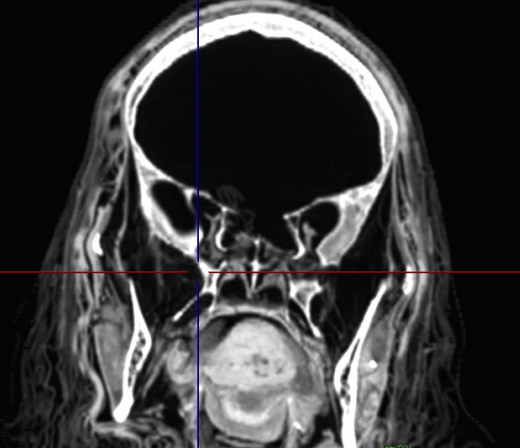


Tilt: 0.0
120 kV
200 mA
XY Plane IP - (0.8 mm)
W: 1531/C: -266
Slice 147 of 249

\$Revision: 1.80 \$ of DICOM conversion

Tilt: 0.0
120 kV
200 mA
XZ Plane - (480.2813 μm)
W: 1531/C: -266
Slice 330 of 512

Non-Primary Study



Tilt: 0.0
120 kV
200 mA
XZ Plane - (480.2813 μm)
W: 1531/C: -266
Slice 330 of 512



Khonsuemma'a (Khert) (Cat.3)

ID: IMP00096

Sex: Male

Estimated age: 30-44

Institution: Leiden University (Netherlands)

Period: Third Intermediate Period

Site: Thebes

Modality: CT

Tilt: 0.0
120 KV
200 mA

3D Rendering
WF 117/C: -23

CT TWIN
IMP00096

Viewport: 20.117 x 10.650 cm
Angle: 0.0° 0.0°

Tilt: 0.0
120 KV
200 mA

XY Plane IP - (200 µm)
W: 1640/C: -52
Slice 82 of 163

Viewport: 10.658 x 5.620 cm
Angle: 90.0° -90.0°

Non-Primary Study

Tilt: 0.0
120 KV
200 mA

YZ Plane - (199.2188 µm)
W: 1640/C: -52
Slice 219 of 512

A.M.C. Amsterdam CT TWIN
Khonsuemma (Kheru) IMP00096
Tuesday, Jan 01, 1901 IMP00096

Viewport: 10.658 x 5.638 cm
Angle: 0.0° 90.0°

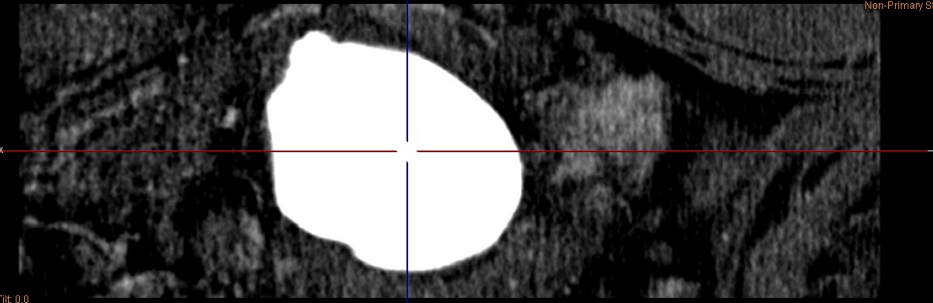
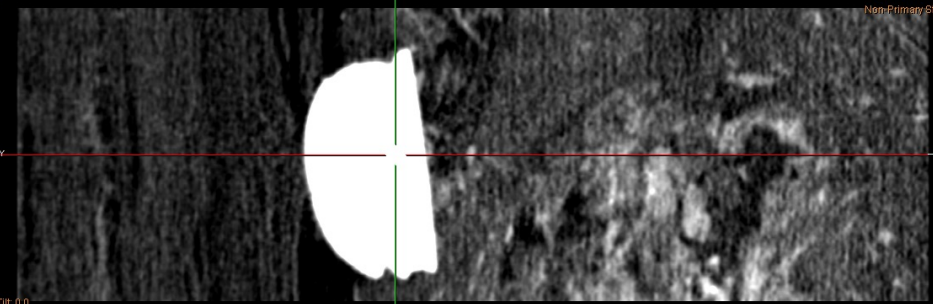
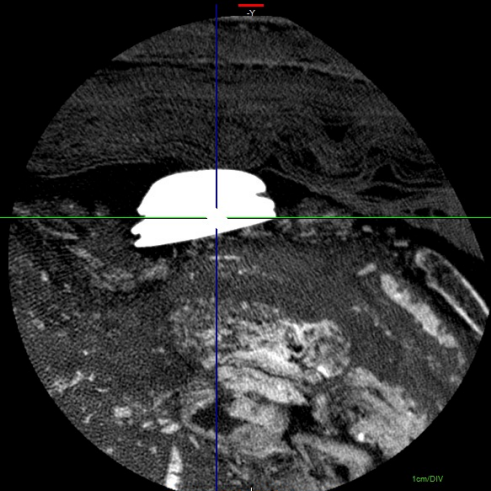
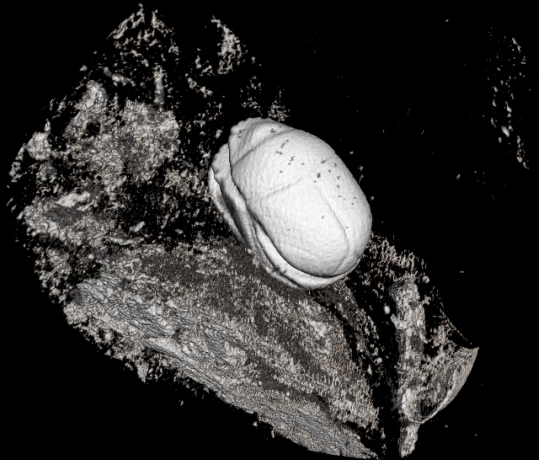
Non-Primary Study

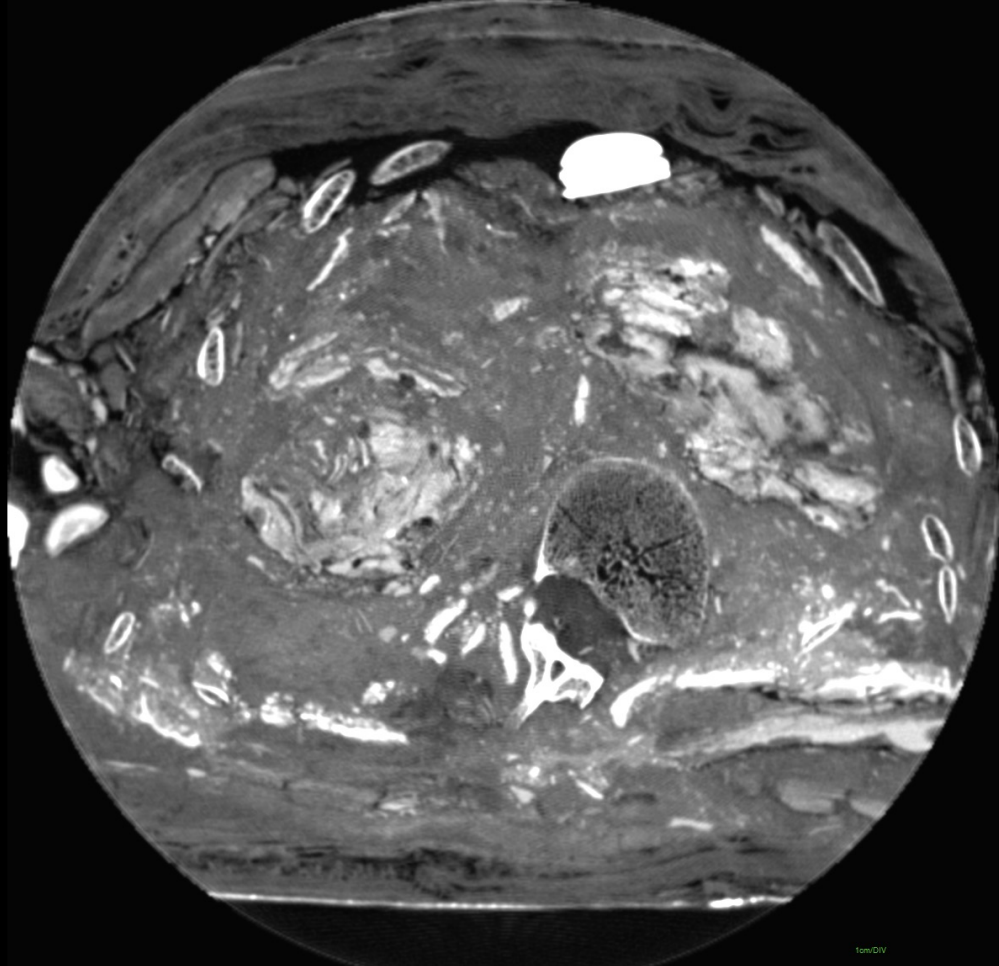
Tilt: 0.0
120 KV
200 mA

XZ Plane - (199.2188 µm)
W: 1640/C: -52
Slice 300 of 512

Revision: 1.80 \$ of DICOM conversion

Revision: 1.80 \$ of DICOM conversion





TR: 0.0
120 kV
210 mA

XY Plane IP - (0.8 mm)
W: 1354/C: -352
Slice 64 of 147

Revision: 1.72 \$ of DICOM conversion

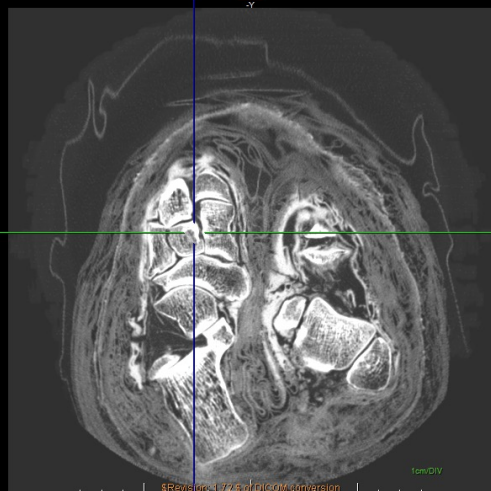


Tilt: 0.0
120 kV
200 mA

3D Rendering
W: 159; C: 394

CT TWIN
IMP00096

Viewport: 44.968 x 23.806 cm
Angle: -0.1° 0.0°



\$Revision: 1.72 \$ of DICOM conversion

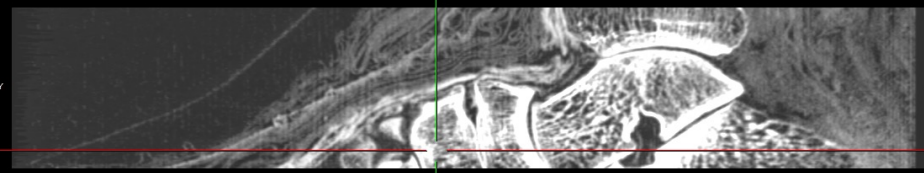
Tilt: 0.0
120 kV
200 mA

XY Plane IP - (300.0005 µm)
W: 1600; C: -500
Slice 119 of 134

\$Revision: 1.72 \$ of DICOM conversion

Viewport: 23.824 x 12.581 cm
Angle: 90.0° -90.0°

Non-Primary Study



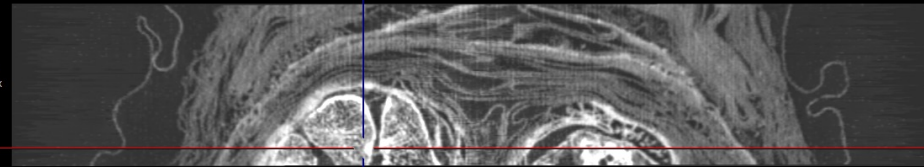
Tilt: 0.0
120 kV
200 mA

YZ Plane - (445.3132 µm)
W: 1600; C: -500
Slice 196 of 512

A.M.C. Amsterdam CT TWIN
Khonsuemma's (Kheru)
Tuesday, Sep 09, 1997 M IMP00096

Viewport: 23.831 x 12.605 cm
Angle: -0.1° 90.0°

Non-Primary Study



Tilt: 0.0
120 kV
200 mA

XZ Plane - (445.3125 µm)
W: 1600; C: -500
Slice 276 of 512

\$Revision: 1.72 \$ of DICOM conversion

\$Revision: 1.72 \$ of DICOM conversion

