

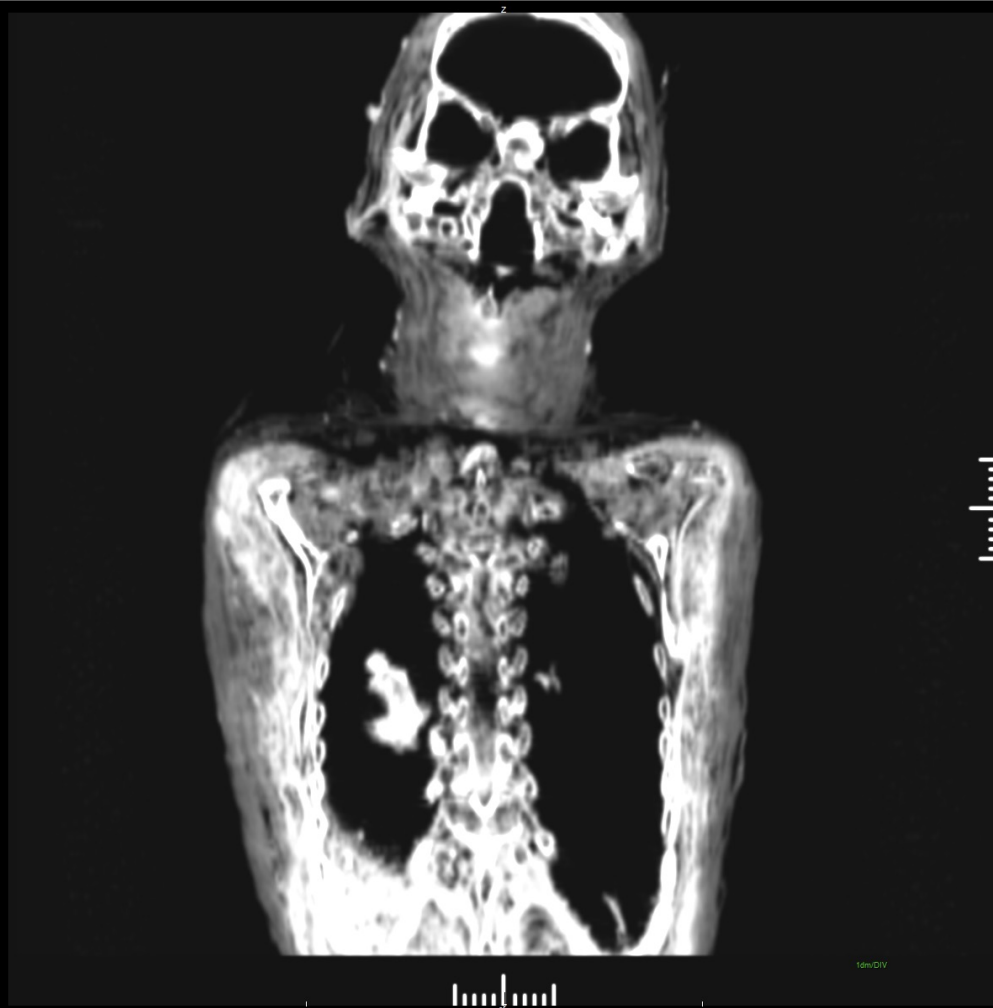


Tilt: 0.0
120 kV
140 mA
1.0 s
XZ Plane IP - (0.5 mm)
W: 1332/C: -370
Slice 3 of 12

Renpit-Nefert

ID: IMP00078
Sex: Female
Estimated age: 35-40
Institution: South Australia Museum
Period: Late Period
Site: Thebes
Modality: Reformatted CT/X-Ray

Series #: 232
Number of Images: 12



Tilt: 0.0
120 kV
140 mA
1.0 s
YZ Plane IP - (0.5 mm)
W: 1310/C: -474
Slice 10 of 12

1cm DIV

A

Series #: 233
Number of Images: 12