

# Pisa 1

ID: IMP00001

Sex: Male

Estimated age: 25-35

Institution: Pisa University

Period & Site: Unknown

LightSpeed RT16  
IMP00001  
Body

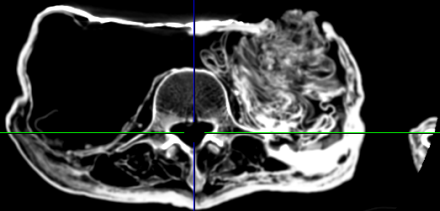


Tilt: 0.0  
120 kV  
99 mA  
0.9 s  
3D Rendering  
W: 0/C: 203



LightSpeed RT16  
IMP00001  
Body

Viewport: 63.112 x 33.412 cm  
Angle: 0.0° 0.0°



Tilt: 0.0  
120 kV  
99 mA  
0.9 s  
XY Plane IP - (1.25 mm)  
W: 978/C: -400  
Slice 310 of 532

LightSpeed RT16  
Pisa 1  
IMP00001  
Body  
Wednesday, Jan 01, 1000 IMP00001  
Acc: Unknown  
Viewport: 131.483 x 69.432 cm  
Angle: 90.0° -90.0°

STANDARD  
Non-Primary Study



LightSpeed RT16  
Pisa 1  
IMP00001  
Body  
Wednesday, Jan 01, 1000 IMP00001  
Acc: Unknown  
Viewport: 131.265 x 69.433 cm  
Angle: 0.0° 90.0°

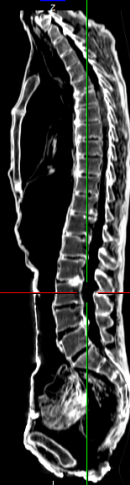
STANDARD  
Non-Primary Study

Tilt: 0.0  
120 kV  
99 mA  
0.9 s  
XZ Plane - (0.625 mm)  
W: 978/C: -400  
Slice 185 of 512



LightSpeed RT16  
Pisa 1  
IMP00001  
Body  
Wednesday, Jan 01, 1000 IMP00001  
Acc: Unknown

STANDARD  
Non-Primary Study



Tilt: 0.0

120 kV

99 mA

0.9 s

YZ Plane - (0.625 mm)

W: 978/C: -400

Slice 248 of 512



LightSpeed RT16  
Pisa 1  
IMP00001  
Body  
Wednesday, Jan 01, 1000 IMP00001  
Acc: Unknown

STANDARD  
Non-Primary Study

Tilt: 0.0

120 kV

99 mA

0.9 s

XZ Plane - (0.625 mm)

W: 978/C: -400

Slice 185 of 512



LightSpeed RT16  
IMP00001  
CT

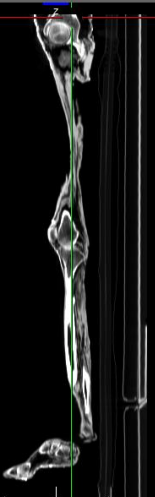


Tilt: 0.0  
120 kv  
513 mA  
0.8 s  
3D Rendering  
W: 795C: 445

LightSpeed RT16  
Pisa 1  
IMP00001  
Wednesday, Jan 01, 1000 IMP00001  
Acc: Unknown  
Viewpoint: 186 250 x 98 406 cm  
Angle: 90.0° - 90.0°

STANDARD  
Non-Primary Study

-Y



Tilt: 0.0  
120 kv  
513 mA  
0.8 s  
YZ Plane - (0.742188 mm)  
W: 1286C: -320  
Slice 156 of 512

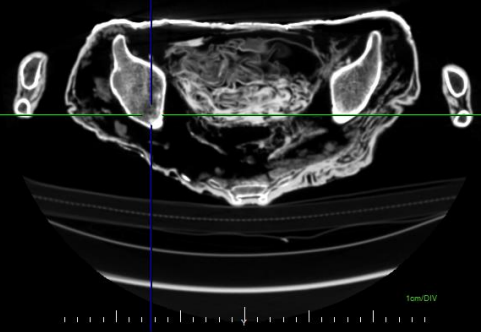
LightSpeed RT16

LightSpeed RT16  
Pisa 1  
IMP00001  
Wednesday, Jan 01, 1000 IMP00001  
Acc: Unknown  
Viewpoint: 186 042 x 98 406 cm  
Angle: 0.0° 90.0°

STANDARD  
Non-Primary Study

-X

LightSpeed RT16  
IMP00001  
CT  
Viewpoint: 74 946 x 39 677 cm  
Angle: 0.0° 0.0°



Tilt: 0.0  
120 kv  
138 mA  
0.8 s  
XY Plane IP - (2.5 mm)  
W: 1286C: -320  
Slice 2 of 377

LightSpeed RT16  
Pisa 1  
IMP00001  
Wednesday, Jan 01, 1000 IMP00001  
Acc: Unknown  
Viewpoint: 186 042 x 98 406 cm  
Angle: 0.0° 90.0°

STANDARD  
Non-Primary Study

-X

LightSpeed RT16  
Pisa 1  
IMP00001  
Wednesday, Jan 01, 1000 IMP00001  
Acc: Unknown

STANDARD  
Non-Primary Study

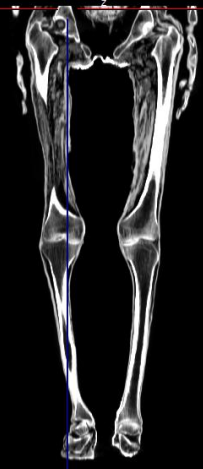
1cm/DIV



LightSpeed RT16  
Pisa 1  
IMP00001  
Wednesday, Jan 01, 1000 IMP00001  
Acc: Unknown

STANDARD  
Non-Primary Study

1cm/DIV



LightSpeed RT16  
Pisa 1  
IMP00001  
Wednesday, Jan 01, 1000 IMP00001  
Acc: Unknown  
Viewpoint: 186 042 x 98 406 cm  
Angle: 0.0° 90.0°

STANDARD  
Non-Primary Study

-X

LightSpeed RT16  
Pisa 1  
IMP00001  
Wednesday, Jan 01, 1000 IMP00001  
Acc: Unknown

STANDARD  
Non-Primary Study

1cm/DIV