

Tadis or Ta(net)kharu (Cat.5)

ID: IMP00098

Sex: Female

Estimated age: 52-60

Institution: Leiden University (Netherlands)

Period: Third Intermediate Period

Site: Thebes

Modality: CT

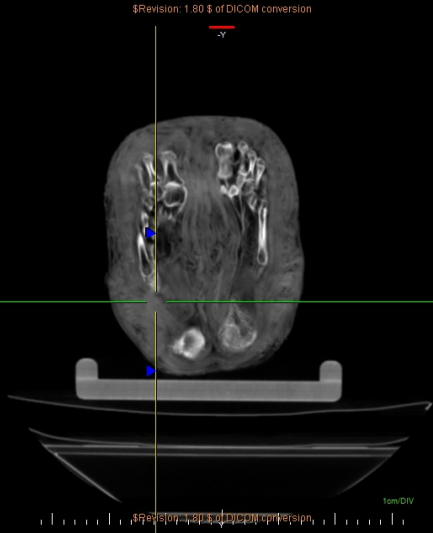


TIR: 0.0
120 kV
200 mA

3D Rendering
W: 540/C: -154

CT TWIN
IMP00098

Viewport: 84.807 x 44.898 cm
Angle: 0.0° 0.0°



\$Revision: 1.80 \$ of DICOM conversion

-Y

TIR: 0.0
120 kV
200 mA

XY Plane IP - (3.1 mm)
W: 1416/C: -294
Slice 240 of 246

Viewport: 150.781 x 79.623 cm
Angle: 90.0° -90.0°

Non-Primary Study

TIR: 0.0
120 kV
200 mA

VZ Plane - (0.8398438 mm)
W: 1416/C: -294
Slice 185 of 512

A.M.C. Amsterdam
Tadis or Tainetkharu
IMP00098

CT TWIN
IMP00098

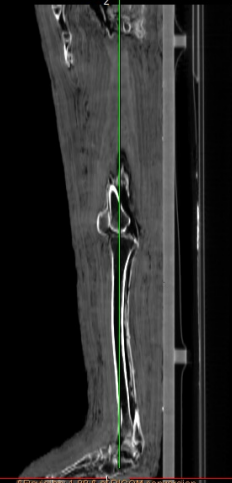
Non-Primary Study

Viewport: 150.531 x 79.623 cm
Angle: 0.0° 90.0°

Non-Primary Study

TIR: 0.0
120 kV
200 mA

XZ Plane - (0.8398438 mm)
W: 1416/C: -294
Slice 235 of 512



\$Revision: 1.80 \$ of DICOM conversion

\$Revision: 1.80 \$ of DICOM conversion

Non-Primary Study

Non-Primary Study

A.M.C. Amsterdam
Tadis or Tainetkharu
IMP00098

Non-Primary Study

Non-Primary Study