

# Mummy of a Woman (Cat. 2)

ID: IMP00095

Sex: Female

Estimated age: 52-60

Institution: Leiden University (Netherlands)

Period: Third Intermediate Period

Site: Thebes

Modality: CT

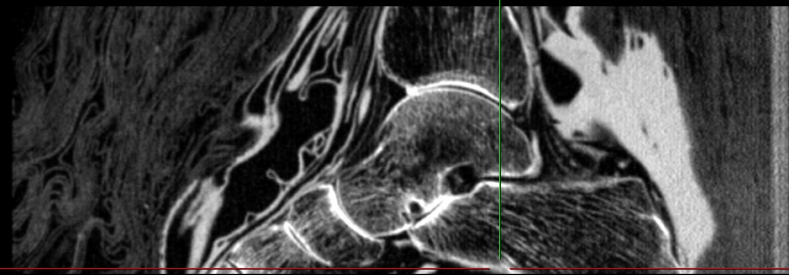
Acc: Third intermediate 21st to 22nd D 1080 to 712BCE

Acc: Third intermediate 21st to 22nd D 1080 to 712BCE

Viewport: 21.734 x 11.477 cm Angle: 90.0° -90.0°

Non-Primary Study

Non-Primary Study



TIH: 0.0 120 kV 100 mA

TIH: 0.0 120 kV 100 mA

3D Rendering W: 677/C: 351

VZ Plane - (406.25 µm) W: 1503/C: -243 Slice 182 of 512



MxTwin Female 52 to 60yo

A.M.C. Amsterdam Mummy of a Woman IMP00095 Female 52 to 60yo

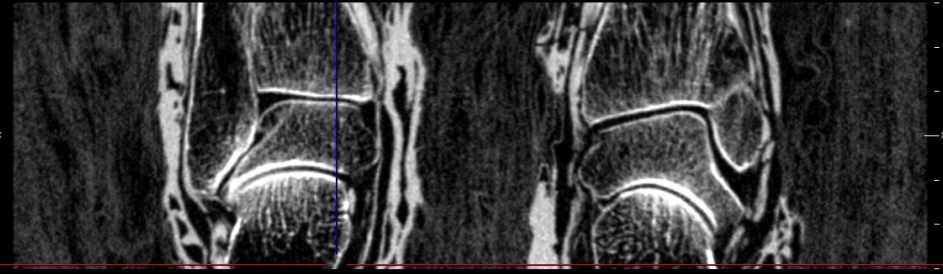
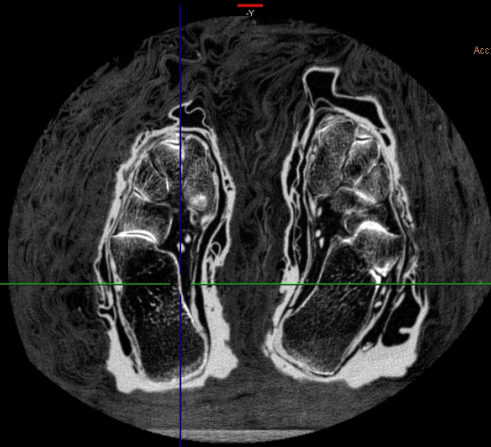
A.M.C. Amsterdam Mummy of a Woman IMP00095

Viewport: 41.023 x 21.718 cm Angle: 0.0° 0.0°

Acc: Third intermediate 21st to 22nd D 1080 to 712BCE

Acc: Third intermediate 21st to 22nd D 1080 to 712BCE

Viewport: 21.734 x 11.496 cm Angle: 0.0° 90.0°



TIH: 0.0 120 kV 100 mA

TIH: 0.0 120 kV 100 mA

XY Plane IP - (300 µm) W: 1503/C: -243 Slice 198 of 202

VZ Plane - (406.25 µm) W: 1503/C: -243 Slice 230 of 512

Revision: 1.80 % of DICOM conversion

Revision: 1.80 % of DICOM conversion

-x

Tilt: 0.0  
120 kV  
25 mA  
27.0 s  
XZ Plane IP - (0.9 mm)  
WV: 887/C - 41  
Slice 1 of 8



Revision 1.30.0 of DICOM conversion

1cm/DIV

A